



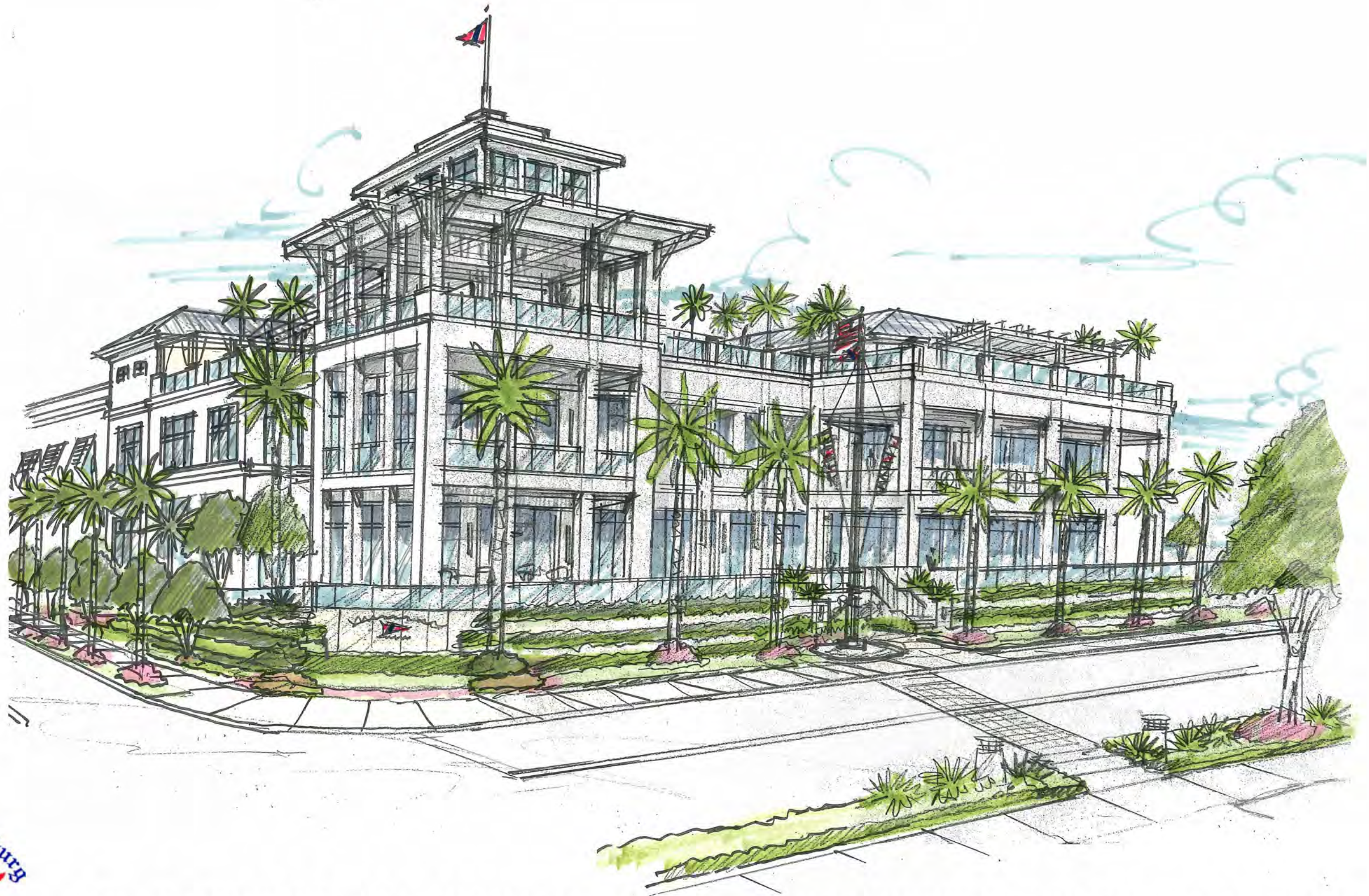
SPINAOROURKE
+ PARTNERS

ARCHITECTURE | INTERIOR DESIGN





Spina O'Rourke + Partners is an Architectural and Interior Design firm that has been operating in West Palm Beach for over fifty years. We are a team that uses a collaborative and results oriented approach to guide our clients through the entire design-build process. Your involvement will ensure our continue success at delivering design excellence on our Projects throughout the United States.



ST. PETERSBURG YACHT CLUB - CONCEPT DESIGN PRESENTATION

DESIGN STATEMENT

— DESIGN STATEMENT —

Rising as a timeless landmark on Tampa Bay, the St. Petersburg Yacht Club honors more than a century of nautical tradition while embracing urbane coastal luxury. Rooted in its historic 1917 site, the design draws inspiration from sea, sky, and sail, with architecture and interiors that balance heritage and elegance. Sunlit spaces, refined materials, and curated nautical details create an environment where history feels alive, community flourishes, and the spirit of sailing endures for generations to come.





SOUTH STRAUB PARK

1ST AVE NE

ENTRANCE TO CLUB

1ST STREET

BEACH DRIVE NE

BAYSHORE DRIVE NE

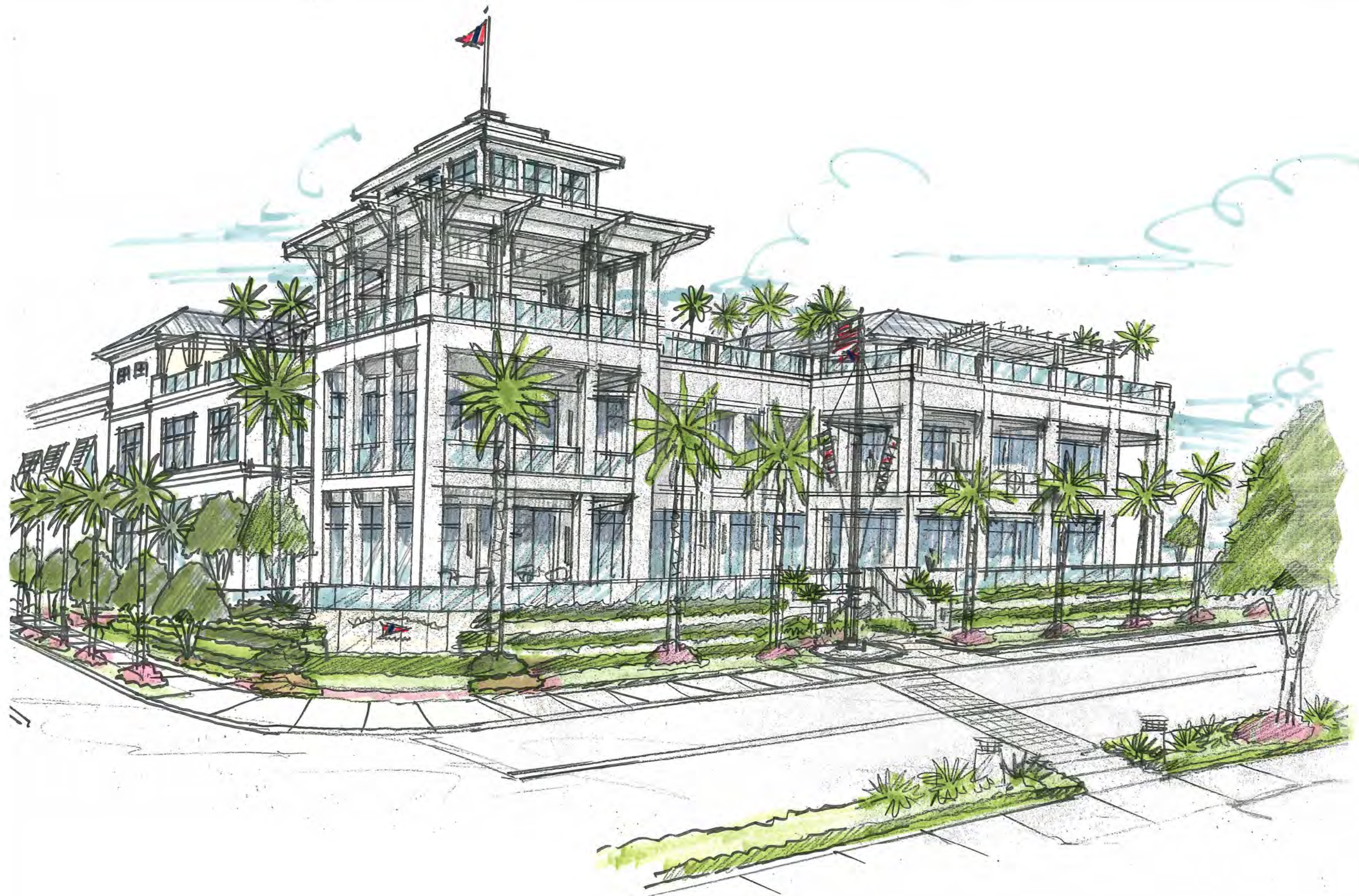
MARINA

CENTRAL AVE. S.E.

PIONEER PARK

EXTERIOR RENDERINGS

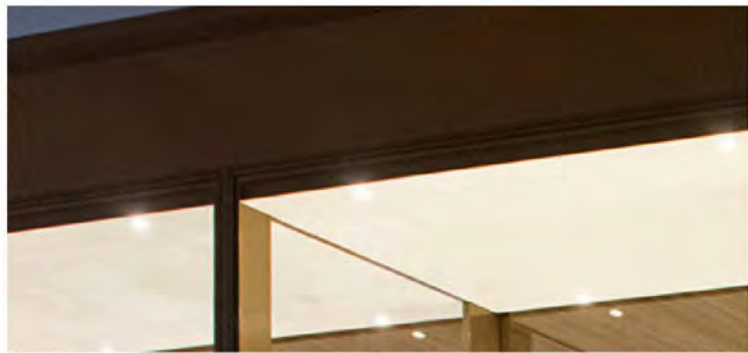








INTERIOR IMAGERY & RENDERINGS



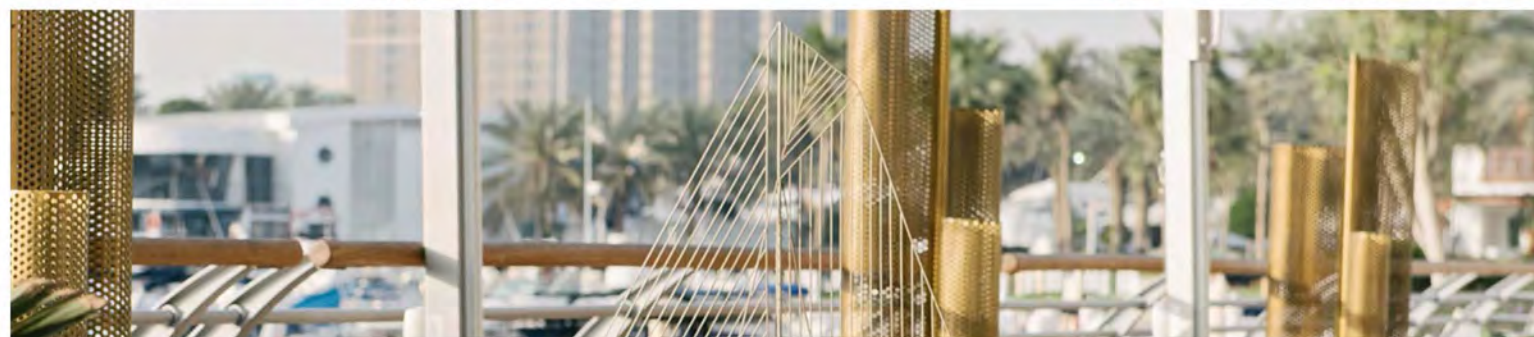
CURATED HERITAGE



INDOOR - OUTDOOR HARMONY



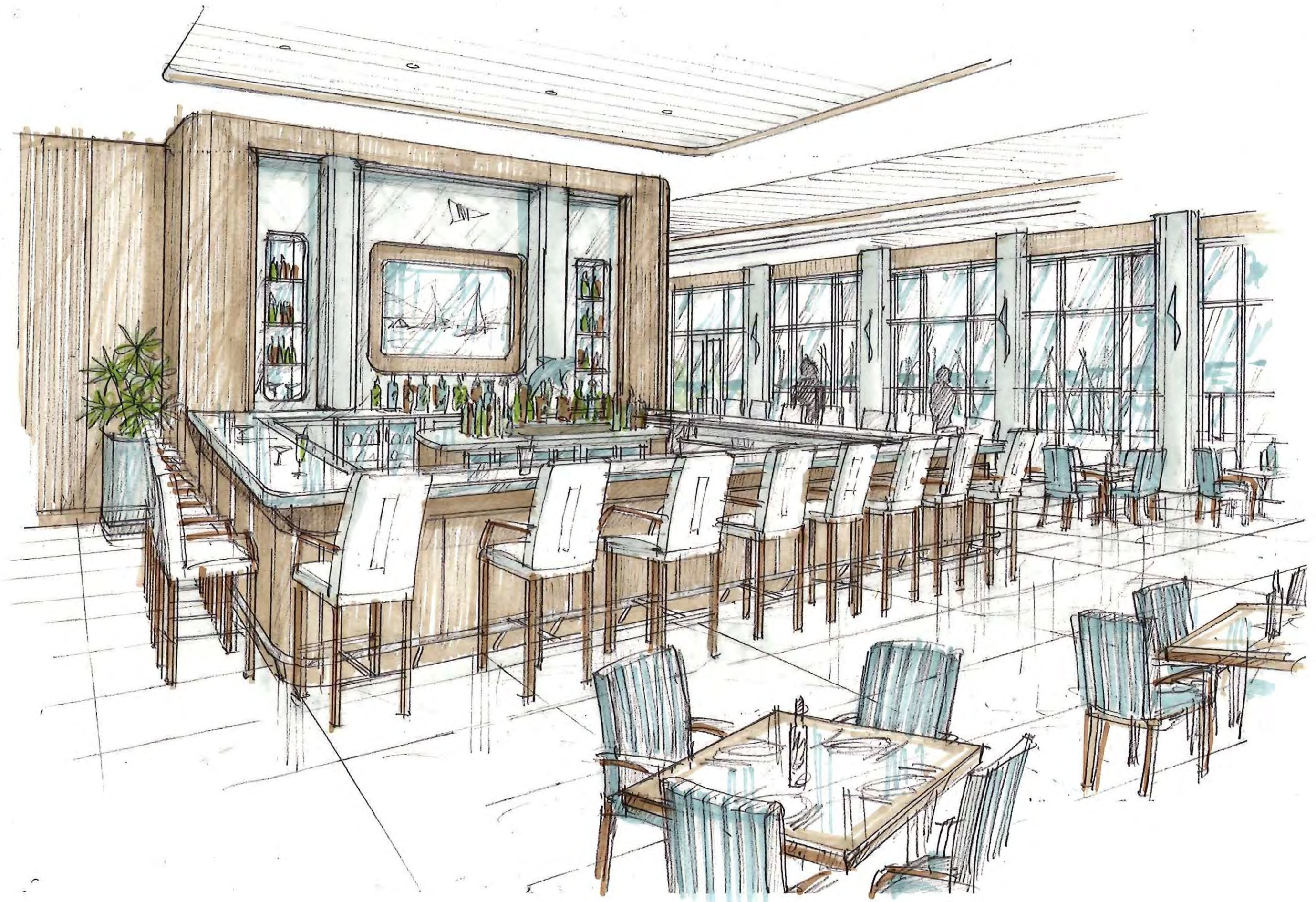
FRAMED WATER VIEWS



REFINED COASTAL PALETTE

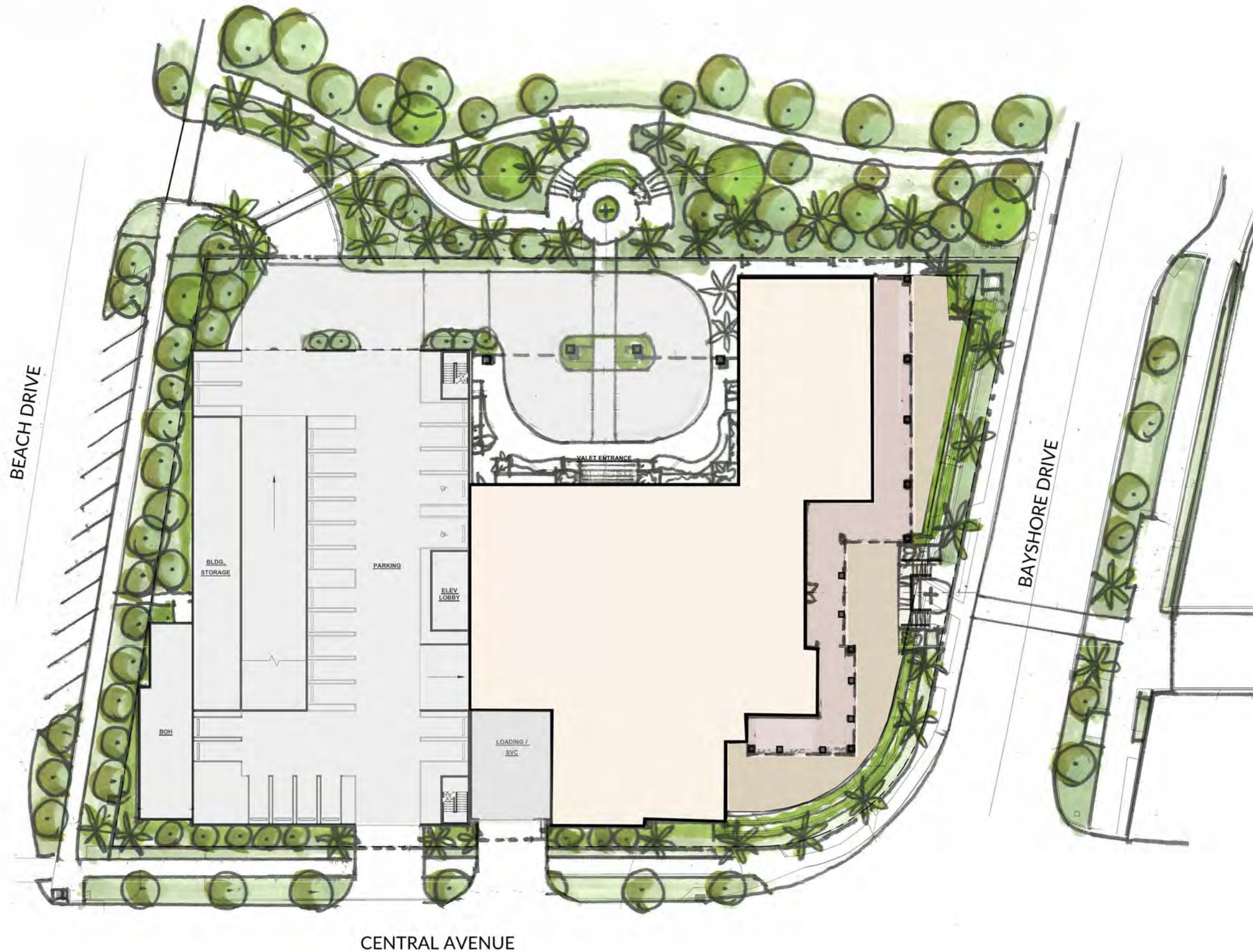








FLOOR PLANS

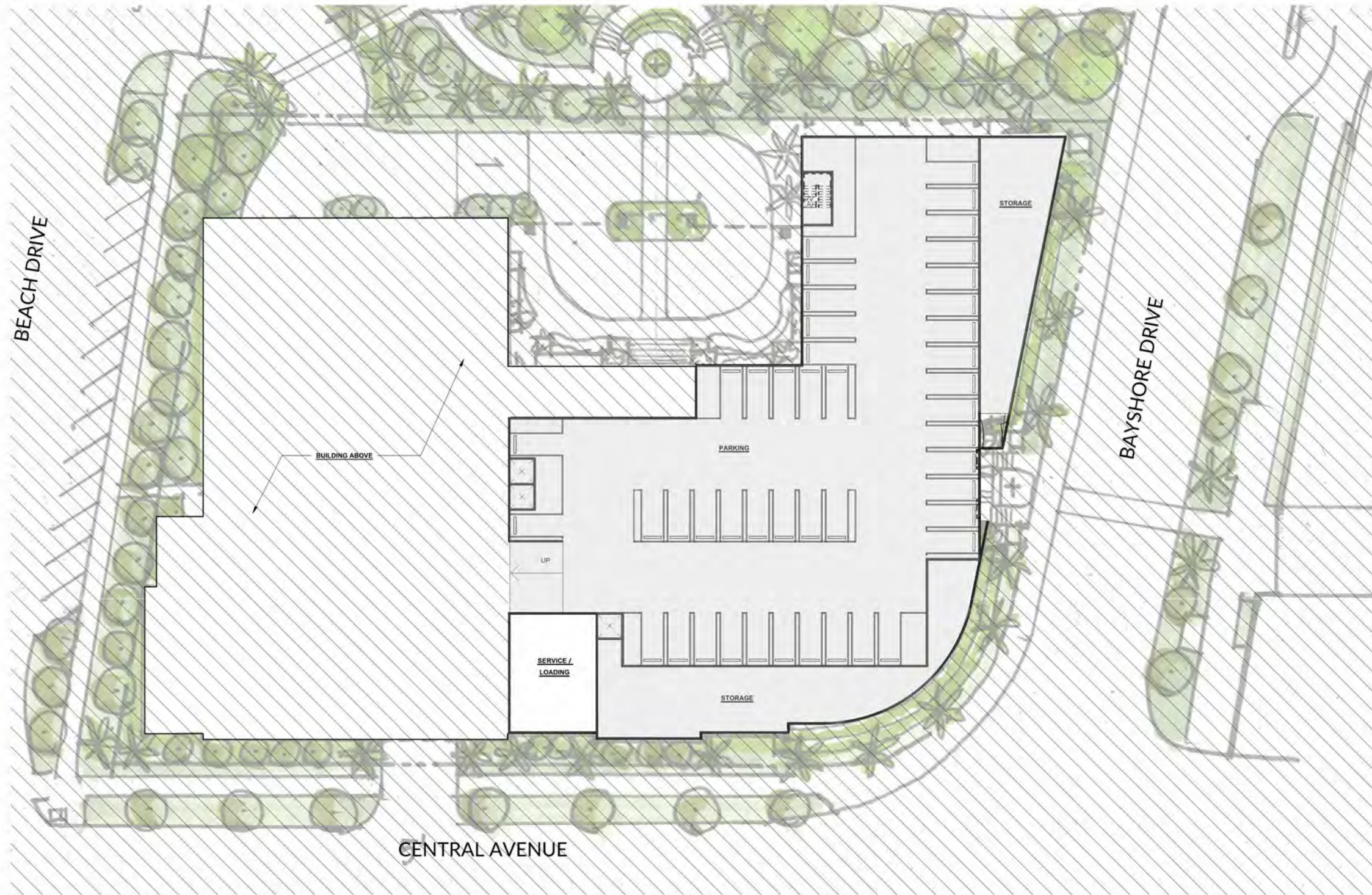


LEGEND:

- INTERIOR CLUBHOUSE SPACE
- EXTERIOR COVERED PATIO
- EXTERIOR PATIO / BALCONY
- GARAGE & DRIVEWAY

FIRST FLOOR SPACES:

- ENTRY LOBBY
- RECEPTION
- SHIP STORE
- HERITAGE LOUNGE & REGATTA ROOM
- 1909 DINING ROOM
- GRAB & GO
- MARINE MEMBERS LOCKER ROOM
- CENTRAL KITCHEN
- BACK OF HOUSE AREA
- OUTDOOR DINING

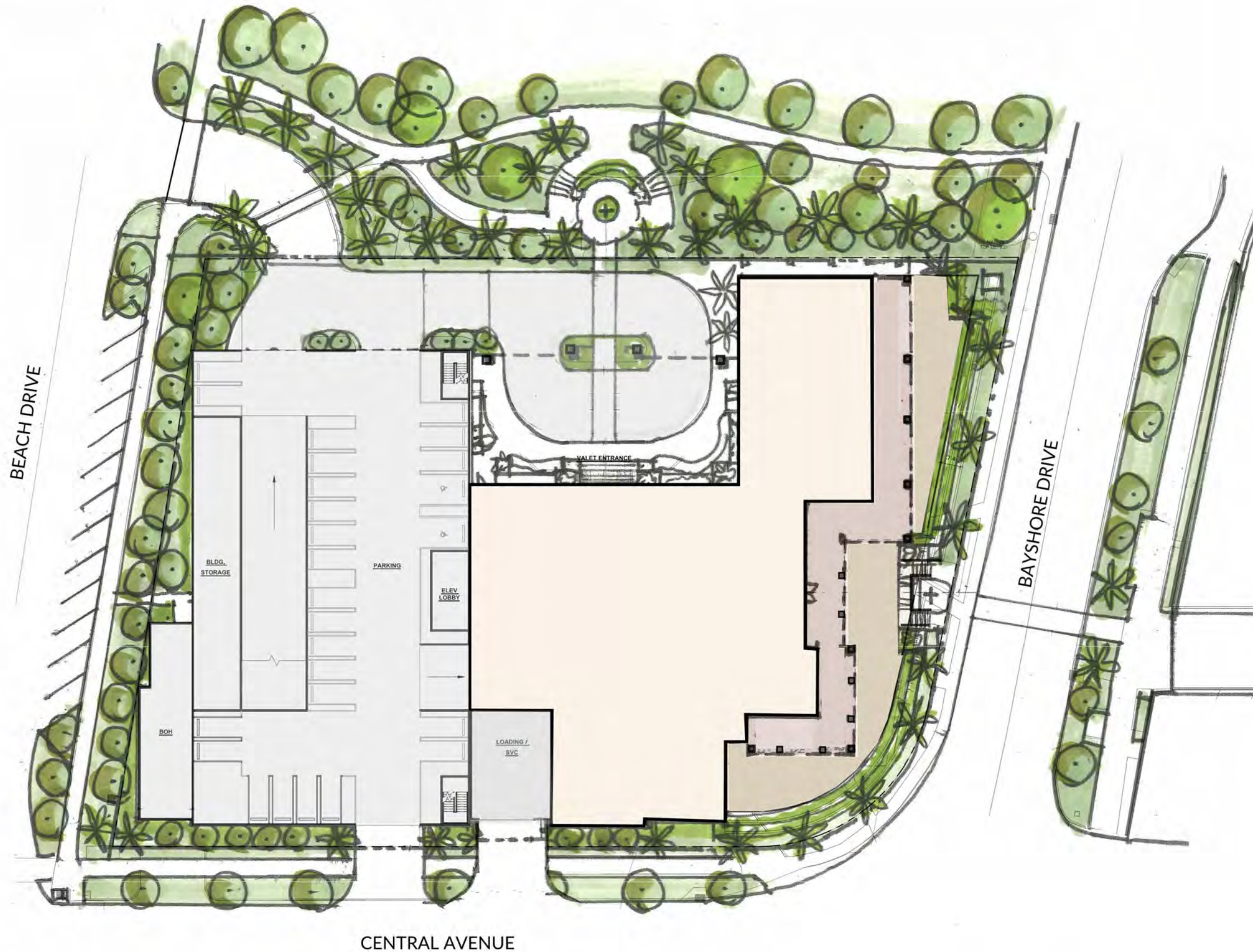


LEGEND:

- INTERIOR CLUBHOUSE SPACE
- EXTERIOR COVERED PATIO
- EXTERIOR PATIO / BALCONY
- GARAGE & DRIVEWAY

BASEMENT SPACES:

- PARKING GARAGE
- STORAGE

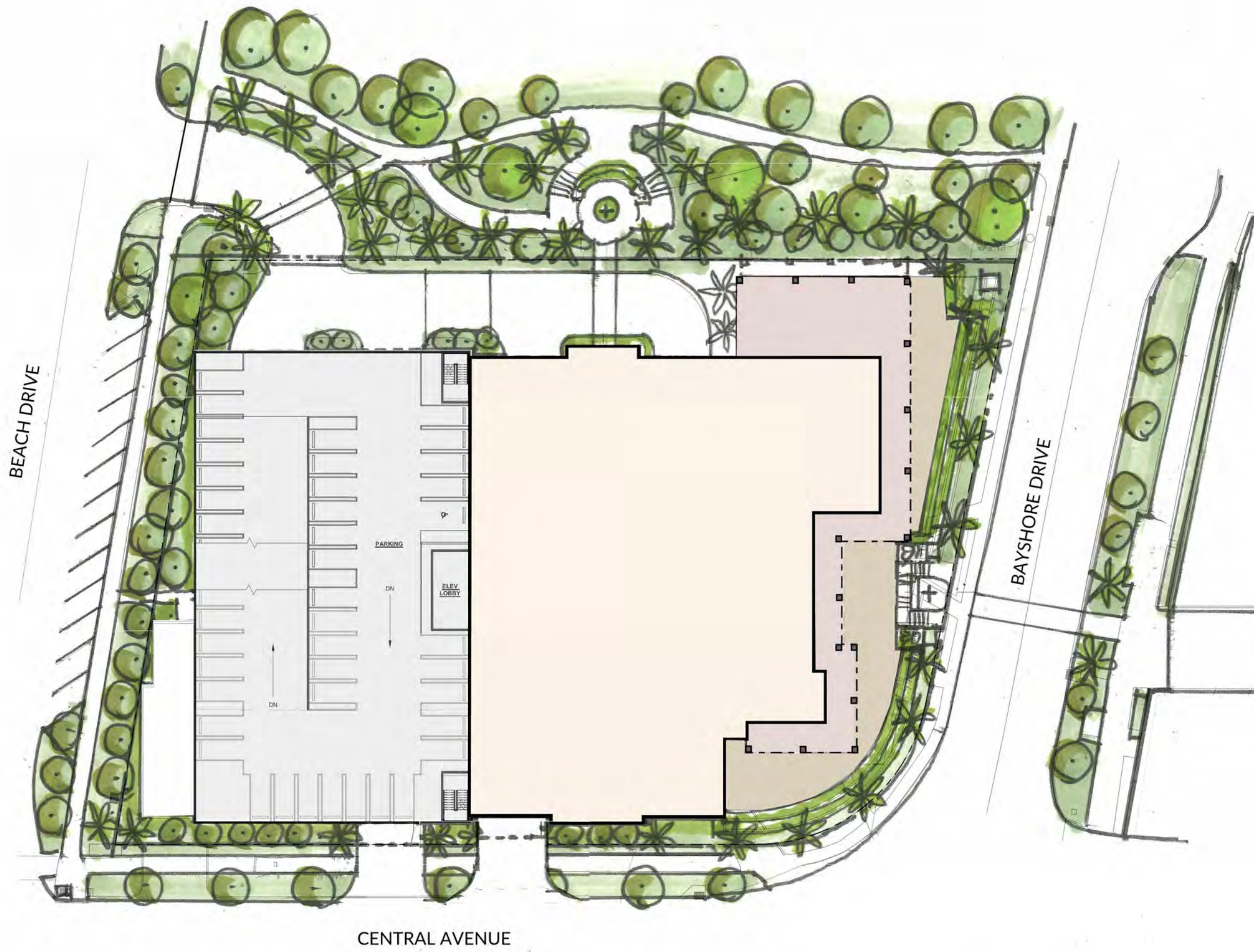


LEGEND:

- INTERIOR CLUBHOUSE SPACE
- EXTERIOR COVERED PATIO
- EXTERIOR PATIO / BALCONY
- GARAGE & DRIVEWAY

FIRST FLOOR SPACES:

- ENTRY LOBBY
- RECEPTION
- SHIP STORE
- HERITAGE LOUNGE & REGATTA ROOM
- 1909 DINING ROOM
- GRAB & GO
- MARINE MEMBERS LOCKER ROOM
- CENTRAL KITCHEN
- BACK OF HOUSE AREA
- OUTDOOR DINING

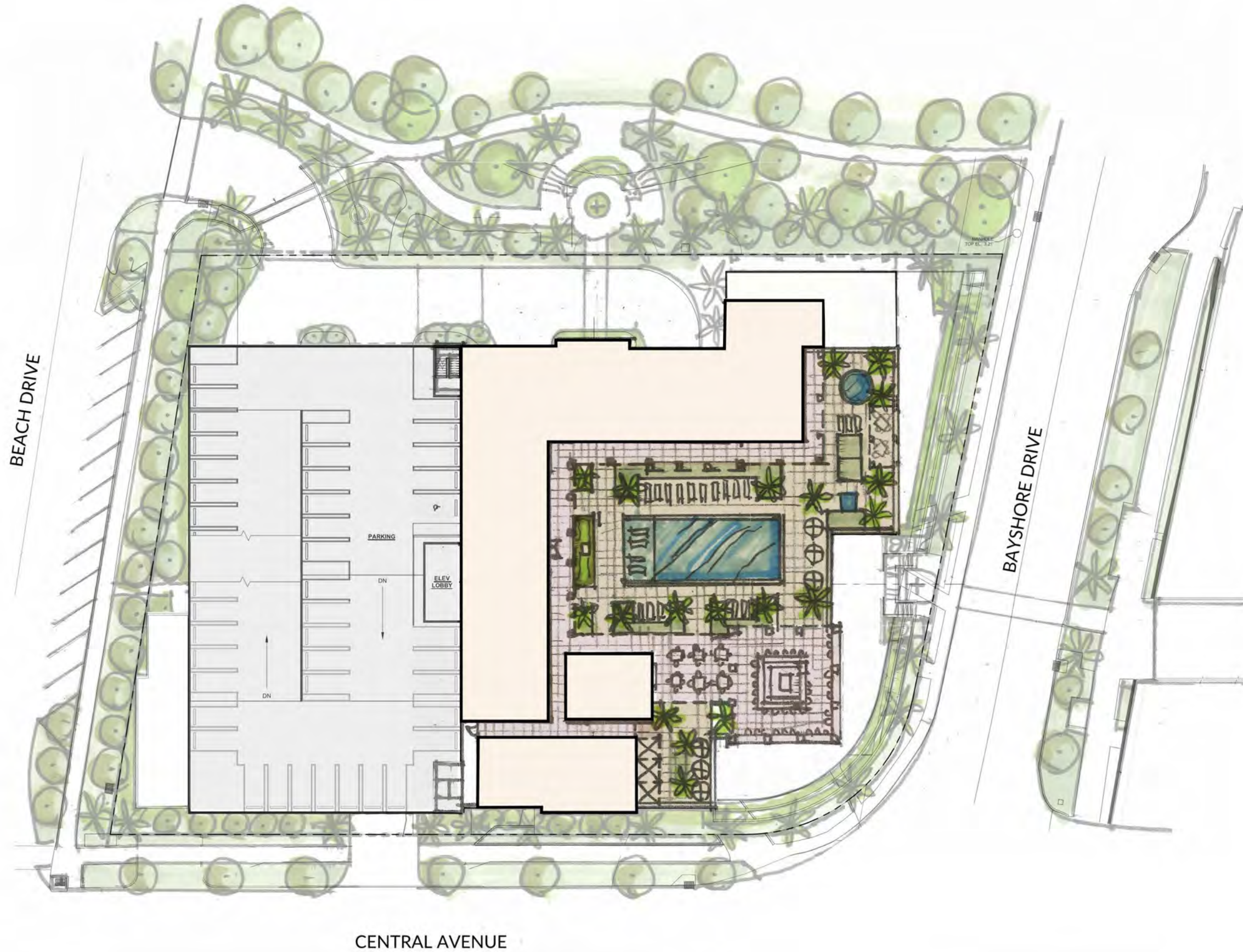


LEGEND:

- INTERIOR CLUBHOUSE SPACE
- EXTERIOR COVERED PATIO
- EXTERIOR PATIO / BALCONY
- GARAGE & DRIVEWAY

SECOND FLOOR SPACES:

- BALLROOM
- PRE-FUNCTION ROOM
- BRIDAL SUITE
- LIBRARY / GALLERY
- CARD ROOMS
- COMMODORE'S ROOM
- BOARD / WINE ROOM
- ADMIN. OFFICES
- BANQUET KITCHEN
- BACK OF HOUSE AREA
- OUTDOOR PATIO



LEGEND:

- INTERIOR CLUBHOUSE SPACE
- EXTERIOR COVERED PATIO
- EXTERIOR PATIO / BALCONY
- GARAGE & DRIVEWAY

THIRD FLOOR SPACES:

- TIKI BAR
- POOL & SUN DECK
- SPECIALTY/CASUAL RESTAURANT
- SNACK BAR
- KID'S ROOM
- MULTI-PURPOSE ROOM
- KITCHEN & STORAGE
- BACK OF HOUSE AREA
- MEMBERS LOCKER ROOM & SHOWER
- OUTDOOR DINING

CENTRAL AVENUE

BAYSHORE DRIVE

BEACH DRIVE



THANK YOU